

Installation of the USB to RS 485 Converter



Contents

CONTENTS	1
GENERAL INSTRUCTIONS	1
HINT	1
INSTALLATION USING SETUP EXECUTABLE (RECOMMENDED INSTALLATION PROCEDURE)	2
INSTALLATION BY PLUGGING IN THE CONVERTER (NOT RECOMMENDED INSTALLATION PROCEDURE)	3
COM-PORT	6
<i>WHERE YOU FIND OUT THE VIRTUAL COM-PORT NUMBER</i>	6
<i>HOW TO CHANGE THE COM-PORT NUMBER</i>	6
DRIVER	8

General instructions

These notes are applicable to the installation of the USB Converter K-104 / K-114 for Windows based platforms.

The following instructions is made for Windows XP. If you use an other operating system (Windows Vista, Windows 95) the installation is similar.

It's recommended to install the driver according to the installation instructions.

Hint

It needs to be installed **two different drivers**. One is for the identification of the device K-104 / K-114 and the other to create a virtual COM-Port.



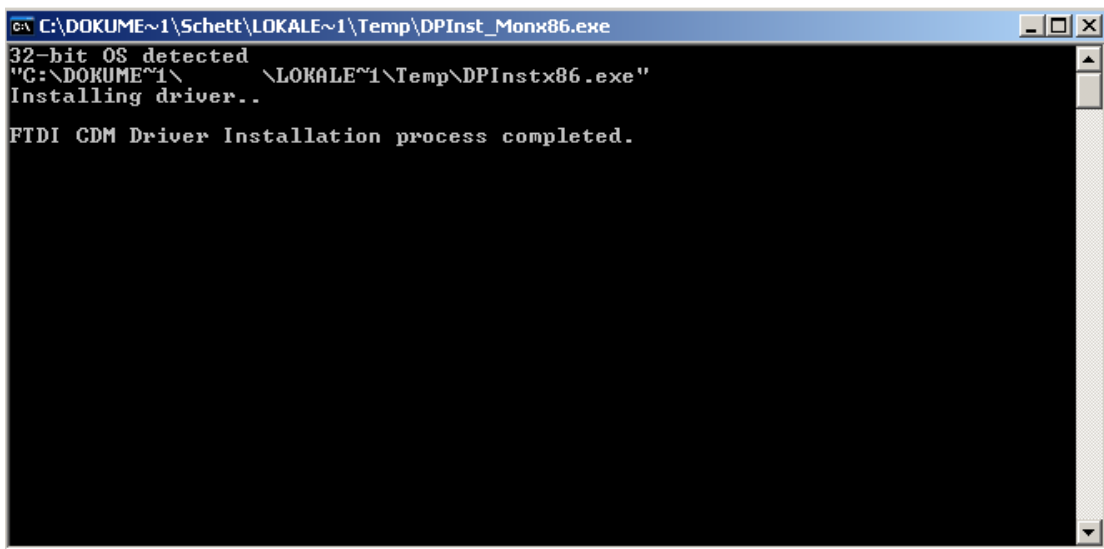
Installation using Setup Executable (recommended installation procedure)

Follow these steps to install your USB Converter properly:

1. Do not connect the K-104 or K-114 converter to the PC (USB-Port)
2. Execute the Setup Executable “CDM20824_Setup” (can be found on the Software CD)

Name	Größe	Typ
Installation_Guide		Dateiordner
CDM20824_Setup	1'703 KB	Anwendung
CDM20824_Setup	1'347 KB	WinZip-Datei
CDM20824_WHQL_Certified	1'323 KB	WinZip-Datei

3. The drivers are installed, you can plug in the K-104 or K-114 converter now



```
C:\DOKUME~1\Schett\LOKALE~1\Temp\DPIInst_Monx86.exe
32-bit OS detected
"G:\DOKUME~1\Schett\LOKALE~1\Temp\DPIInstx86.exe"
Installing driver..
FTDI CDM Driver Installation process completed.
```

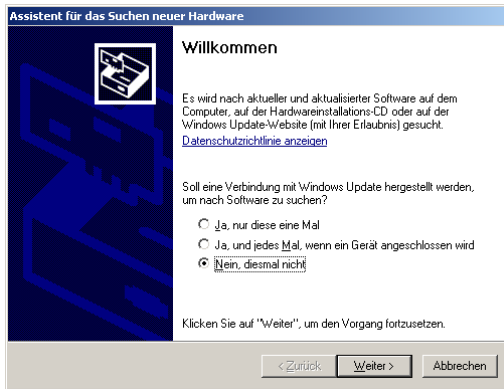
4. The drivers are installed, you can plug in the K-104 or K-114 converter now



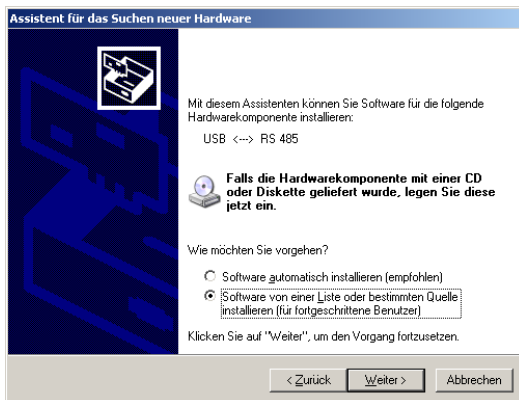
Installation by Plugging In the Converter (not recommended installation procedure)

Follow these steps to install your USB Converter properly:

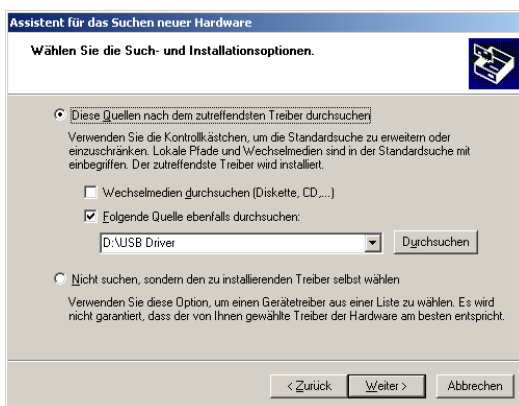
1. Connect the Converter to a free USB Port
2. Wait until the Hardware assistant automatically starts



3. Tick the Checkbox “No” and press the button “Next” to continue



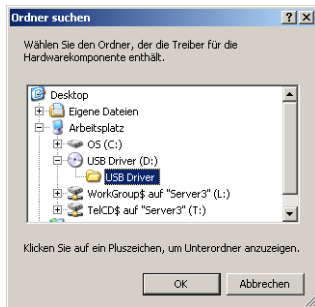
4. Mark the second Checkbox (find the driver yourself) and continue



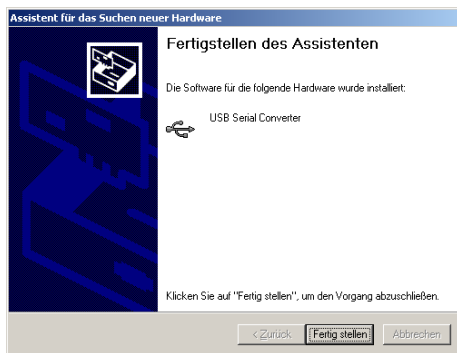
5. Press the button “Browse” to choose the directory where the driver can be found



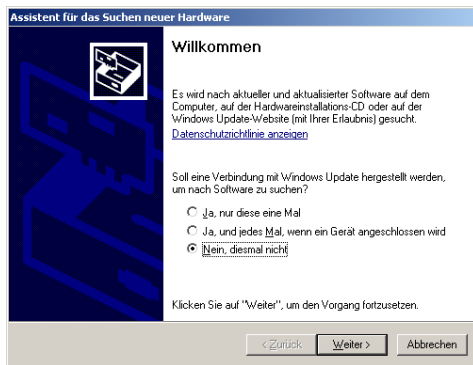
6. Put the delivered Disc in your CD-Drive (Disc: K-104 USB Converter/Software driver)



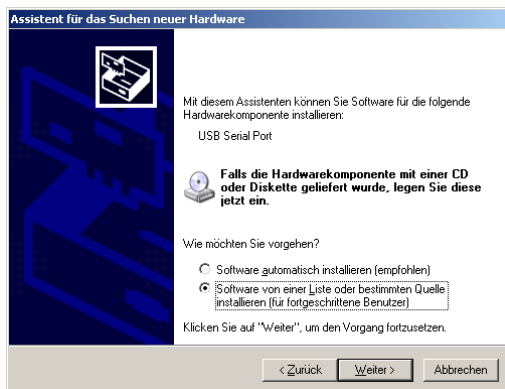
7. Select the folder “USB Driver” of your CD-Drive directory and click on the button “OK”. Then continue the hardware assistant.



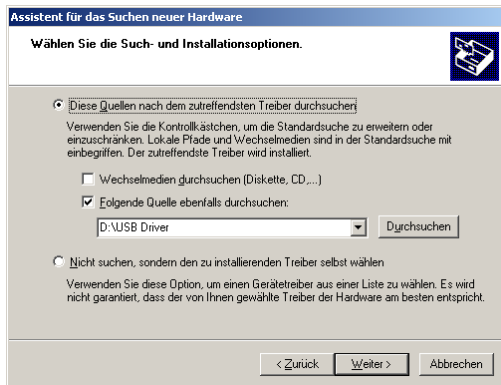
8. Click on the button “Finish”. The installation of the first driver (identification of the K104) is successfully done now.
9. Wait until the Hardware assistant restarts to install the second driver (virtual comport)



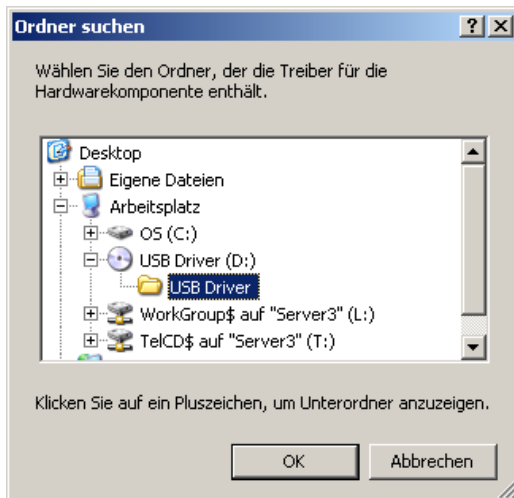
10. Tick the Checkbox “No” and press the button “Next” to continue



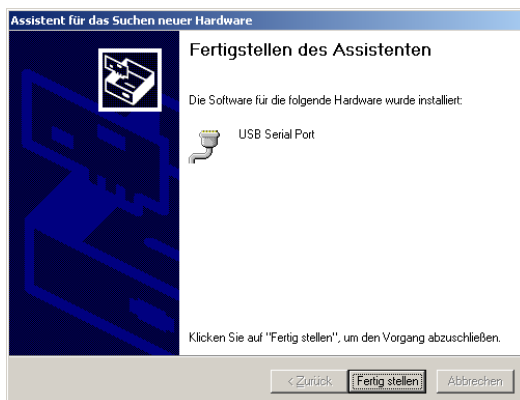
11. Mark the second Checkbox (find the driver yourself) and continue



12. Press the button “Browse” to choose the directory where the driver can be found



13. Select the folder “USB Driver” of your CD-Drive directory and click on the button “OK”. Then continue the hardware assistant.



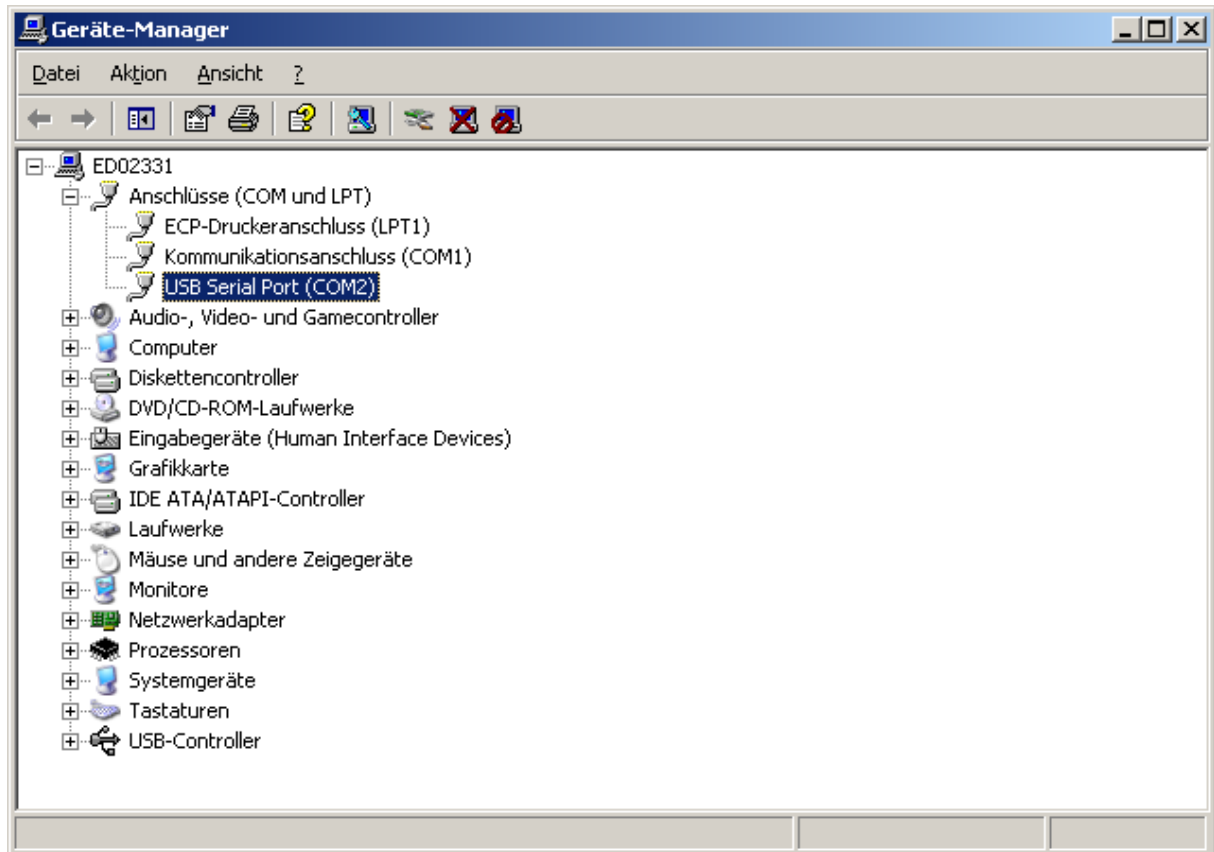
14. The installation of both drivers is finished now. Please read next Chapter COM-Port.



COM-Port

Where you find out the virtual COM-Port number

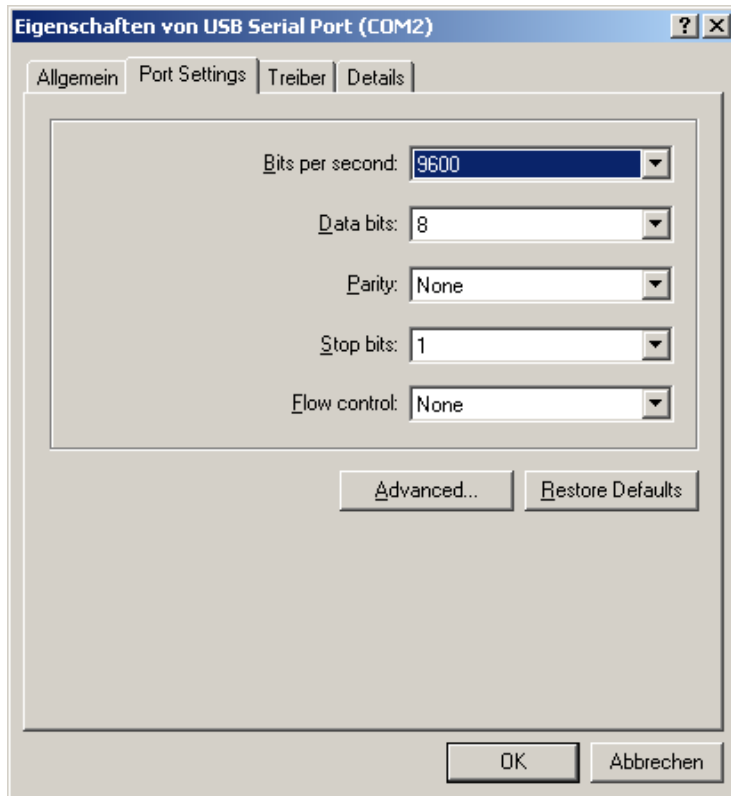
After the installation of the drivers, the virtual COM-Port is automatically assigned to a COM-Port number. To find out which virtual COM-Port number your computer set, open the hardware manager. In the category connections you can find the USB Serial Port (only if your converter is plugged in). In parenthesis the COM Port number is shown.



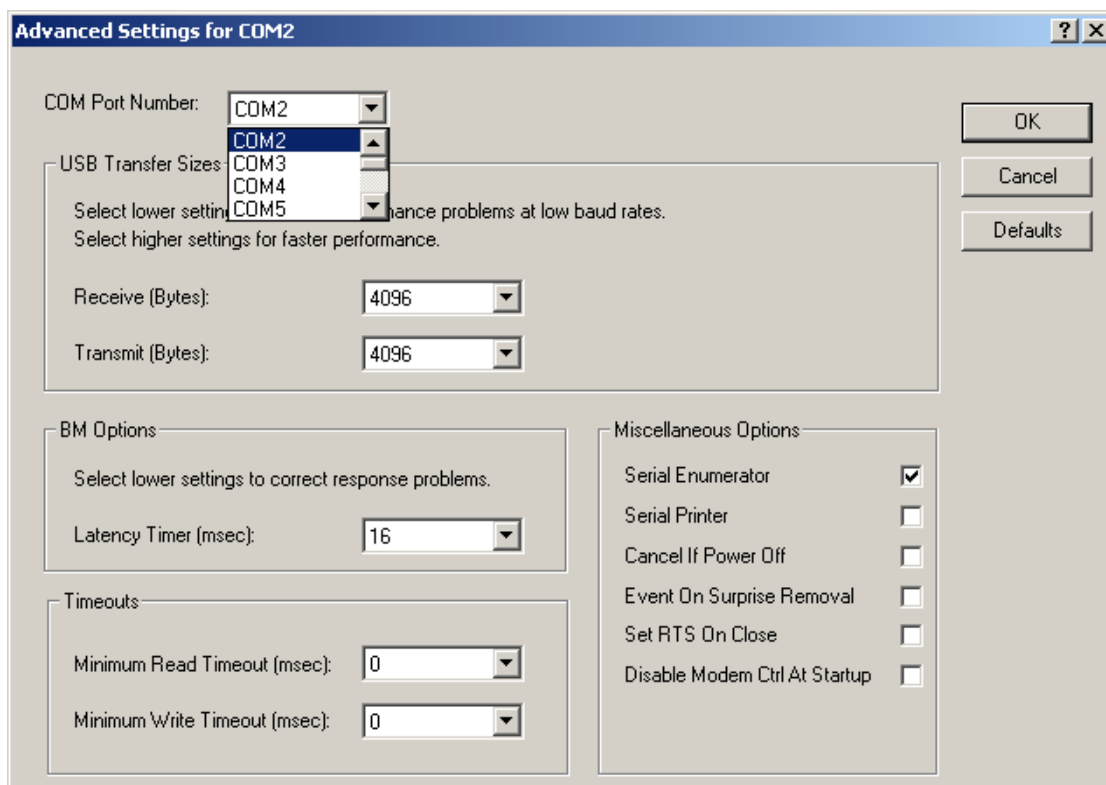
How to change the COM-Port number

To change the COM-Port number double click on the "USB Serial Port" in the Hardware manager and Click on the task "Port settings".





Please click “Advanced” to get to the position where the COM-Port number is displaceable.



In the Toolbar “COM Port number” you can select you preferred COM-Port number.

You can change settings only with admin rights.



Driver

Actual drivers and information can be found in the internet:

<http://www.keller-druck.com>

<http://www.ftdichip.com/Drivers/VCP.htm>

